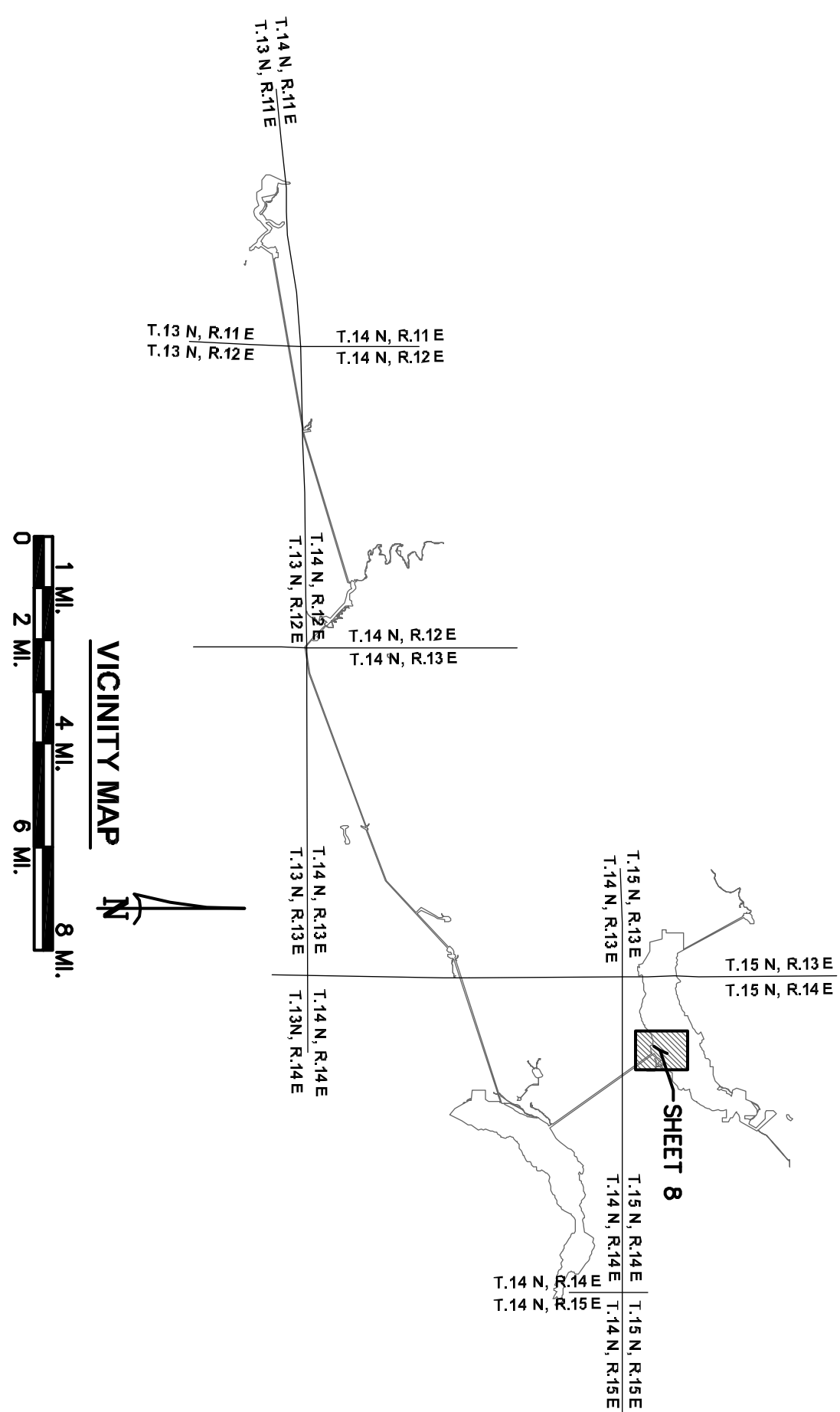
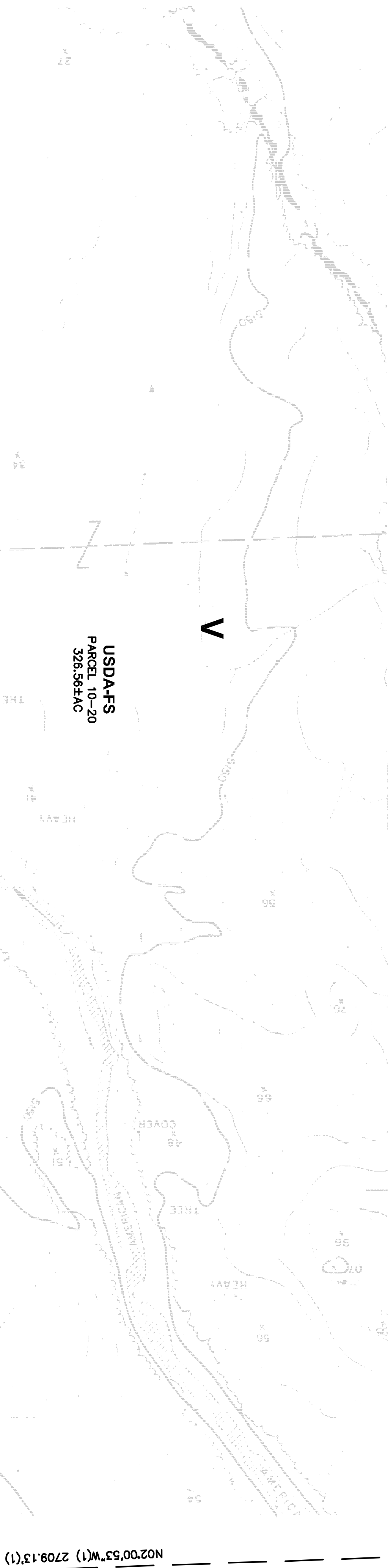
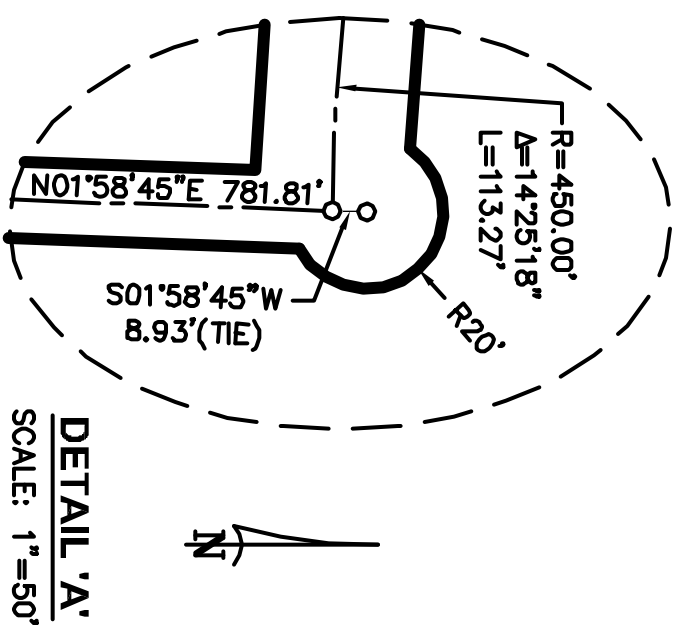


SEE SHEET 6



SEE SHEET 9

SEE SHEET 7



NOTES

SHADED TOPOGRAPHY SHOWN HEREON PER EXHIBIT 'K', SHEET 8, MIDDLE FORK AMERICAN RIVER PROJECT; FRENCH MEADOWS RESERVOIR PROJECT AREA REVISED OCT. 20, 1977

ALL FACILITIES AND FEATURES SHOWN HERE ON ARE PER DATA COLLECTED BY OTHERS.

REFERENCE POINT COORDINATES

NAD83 CALIFORNIA STATE PLANE COORDINATE SYSTEM ZONE II (CSS93, ZONE 2); U.S. SURVEY FEET

SURVEYOR'S STATEMENT

I CERTIFY THAT I SUPERVISED THE SURVEY OF THE PROJECT LINES, THAT THE PROJECT BOUNDARY DELINEATION FOR THE MIDDLE FORK AMERICAN RIVER PROJECT AS SHOWN ON THIS EXHIBIT 'G' IS DEVELOPED WITHIN REASONABLE ACCURACIES AS REQUIRED IN 18CFR4.39 & 18CFR4.41 TO THE GEOGRAPHIC LOCATION. THIS EXHIBIT IS BASED UPON MAPS OF THE EXHIBIT 'K', SHEET 8 OF THE MIDDLE FORK AMERICAN RIVER PROJECT NO.2079 AND BOOK 2 SURVEY'S RECORDS, AND RECORDS PLACED ON FILE WITH THE CALIFORNIA DEPARTMENT OF WATER CONTROL. I HAVE REVIEWED THE RECORDS AND DATA AND AM Satisfied THAT THE PROJECT BOUNDARY DELINEATION AND DATA ACCURACY.

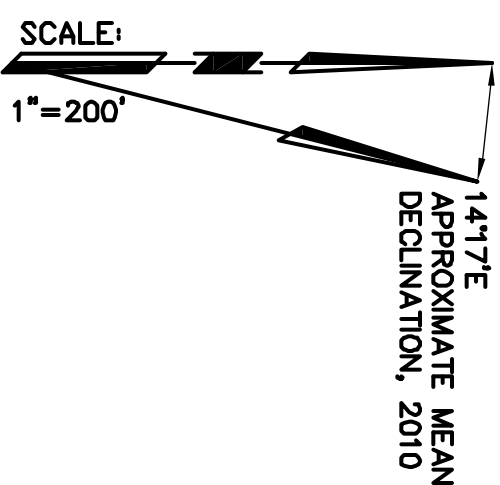
ANDREGG, GEOMATICS



DENNIS G. MEIER, L.S. 4751
LICENSE EXPIRES: 9/30/11

SEE SHEET 31

SEE DETAIL 'A'



LEGEND

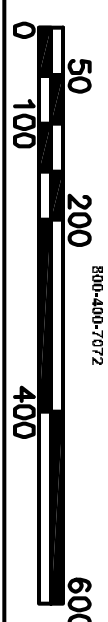
- PROJECT BOUNDARY
- RESERVOIR STORAGE STAGE
- TUNNEL (WITH SHAFT)
- SECTION LINE, ESTABLISHED
- SECTION LINE, PROTRACTED
- SUBDIVISION LINE, GOVERNMENT LAND SURVEY
- SECTION CORNER, FOUND
- SECTION CORNER, RECORD
- 1/4 CORNER, FOUND
- 1/4 CORNER, RECORD
- COUNTY LINE
- U.S. FOREST BOUNDARY
- PROJECT BOUNDARY CORNER
- OVERALL DIMENSION
- REFERENCE POINT
- PUBLIC LAND
- ROAD
- BRIDGE
- RIVER OR PERENNIAL STREAM
- INTERMITTENT STREAM
- SPRING
- POND OR LAKE, WATER LEVEL, JULY 1961
- TREES OR BRUSH
- STREAM FLOW GAGING STATION
- WATER SURFACE GAGING STATION
- CAMPGROUND
- BUILDING
- GOVERNMENT BENCH MARK
- BENCH MARK RELOCATION
- PHOTOGRAMMETRIC PRINCIPAL POINT
- PHOTOGRAMMETRIC ELEVATION
- MINERAL RIGHTS ONLY
- RECORD PER 2 ROS 78

EXHIBIT 'G' PROJECT 2079

MIDDLE FORK AMERICAN RIVER PROJECT
FRENCH MEADOWS RESERVOIR PROJECT AREA
A PORTION OF SECTIONS 29 & 32, T.15 N., R.14 E., M.D.M.

PLACER COUNTY, CALIFORNIA
SCALE: 1"=200' FEBRUARY 11, 2011

ANDREGG
GEOMATICS



SHEET 8 OF 33